



CLEMONS CONCRETE COATINGS

Professional Grade

ACID STAINS

for Concrete

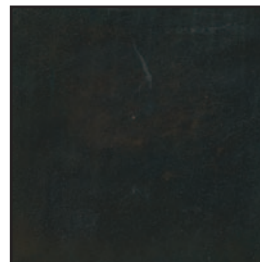
ACID STAINS create beautiful varied colors on cured concrete by reacting with the cement in the concrete surface. **ACID STAINS** are very durable and the colors that they yield will last as long as the concrete surface that they are applied on. Every concrete floor will contain different amounts of minerals resulting in more vibrant colorations and shades on the same floor. No two floors will look alike. The mottled and varied appearance of acid stained floors is common and also one of the big reasons the process has so much appeal. **ACID STAINS** are produced in 12 colors. It is highly recommended to sample stain in an inconspicuous area to determine that the final appearance will be acceptable.



RUSTIC



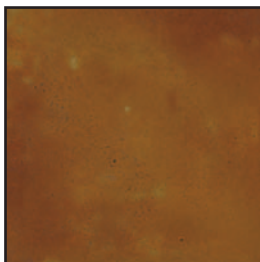
AMBER



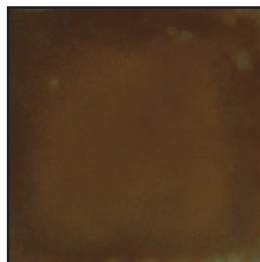
ONYX



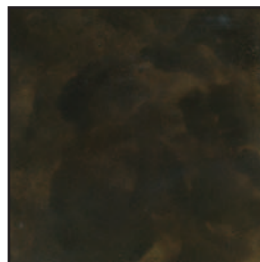
WHEAT



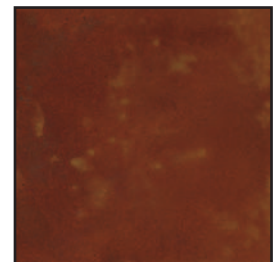
BRONZE



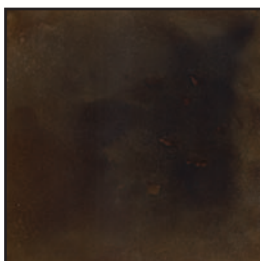
COPPER



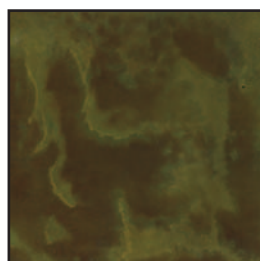
COCOA



GARNET



KODIAK



PATINA*



JADE*



AQUAMARINE*

* Interior use only

★ **ALL TYPES OF CONCRETE SURFACES** ★

ACID STAINS

TOOLS & MATERIALS REQUIRED

- ★ Acid resistant pump-up sprayer with conical tip
- ★ If masking: Painter's masking tape, & green construction paper
- ★ Synthetic-bristle brush (optional)
- ★ Clean water for cleaning equipment
- ★ ETCH & CLEAN
- ★ DEGREASER NEUTRALIZER
- ★ Sealer: SUPREME SEAL for exterior and SUPER POLY for interior concrete floors.
- ★ Eye protection, rubber gloves and respirator.

SURFACE PREPARATION

The most important step to a project is preparation of the surface. The concrete should be at least four weeks old, free from all debris, and clean. DO NOT USE MURIATIC ACID TO CLEAN as you will destroy the important minerals necessary to produce the color range selected. Strip and remove all previous sealers, paints, adhesives, and coatings. For oil spots use Clemons DEGREASER NEUTRALIZER (diluted 4 to 1) and rinse well. Use Clemons ETCH & CLEAN (diluted 4 to 1) to prepare concrete for acid staining. Rinse well. All repairs should be completed prior to starting the application of stain; coatings of any kind must be removed prior to staining.

TEST BEFORE PROCEEDING

Test a small inconspicuous area of less than one square foot. Test to be sure color meets expectation. Test to be sure concrete is compatible. Test for water seep by taping plastic on one square foot of floor. Remove plastic the following day. If floor is wet, you should not stain and seal floor.

APPLICATION

An acid resistant sprayer should be used. Tape off walls or other areas to avoid overspray. Dampen concrete with water but do not puddle. Spray in an overlapping manner, maintaining a wet edge. Allow ACID STAIN to react for at least 6 hours. Clean residue and pour water on floor to approximate the final color. If darker color is desired, apply second coat. Concrete must be fully Neutralized! Use Clemons DEGREASER NEUTRALIZER. Clean residue from floor with DEGREASER NEUTRALIZER using an acid brush. Repeat. Rinse with clean water and mop up excess water. A Wet-Vac may be used. Rinse with clean water until rinse water is free of color and you wipe floor without picking up color. Concrete must be completely free of residue. Expect to rinse with clean water several times. Once dry, test the readiness of the concrete by wiping floor with a white cloth. If it shows residue rinse and dry again. Repeat until no residue remains.

SEALING

Allow concrete 24 hours to dry. Clear sealer is required to enhance the depth of color and should be tested before application. On exterior floors, seal with Clemons SUPREME SEAL-25, a non-yellowing solvent based sealer. For interior floors, two-component SUPER POLY is recommended. Alternately, A-Coat and two coats of Clemons SUPER WAX Polish can be applied over stained interior floors for additional protection and enhancement. Use of SUPER WAX will diminish slipping and scuffing. SUPER WAX may be applied with a lamb's wool applicator or microfiber pad. As a maintenance routine, clean with water only and use SUPER WAX to prevent the need to reapply sealer.

COVERAGE

Coverage is dependent on the age, porosity, weather, and composition of the concrete. A definite coverage rate cannot be determined because every scenario is different. However, as a general rule, 200 square feet per gallon should be average.

TECHNICAL DATA

VOC: <0 g/L
Flash Point: N/A

HMIS

Health	1	Flammability	0
Reactivity	1	Protection	G

DISCLAIMER: Since manufacturer has no control over handling, use or storage; no guarantee expressed or implied, is offered. Clemons Concrete Coatings warrants the product to be free of defects and will replace or refund the purchase price of said products proven defective. Labor cost and/or other consequential damages are not covered by this warranty. Responsibility for claims of any kind is strictly limited to the purchase price of the product. The suitability of the product for any extended use shall be solely up to the user.

Made in U.S.A.

CLEMONS CONCRETE COATINGS

505 Cave Rd ★ Nashville TN 37210 ★ www.ccc-usa.com ★ Tel: 615-872-9099 ★ Fax: 615-872-9052